



# BUSHFIRE EMERGENCY INFORMATION

Recommended Print Size : A3

Information Developed By:



## Lot 70 (66) Capel Street, Kirup

### BUSHFIRE INFORMATION SOURCES AND EMERGENCY CONTACTS

Police/Fire/Ambulance: Dial 000 | Local ABC Radio – 1044 AM Kirup | [www.emergency.wa.gov.au](http://www.emergency.wa.gov.au) (Bushfire Information)

Property Manager: Christine Oldmeadow - 0402 837 489 | DFES - 13 33 37, [www.twitter.com/dfes\\_wa](https://www.twitter.com/dfes_wa), [www.facebook.com/dfeswa](https://www.facebook.com/dfeswa)

## INSTRUCTIONS

### BUSHFIRE IDENTIFIED - EVACUATING THE SITE

#### TRIGGERS TO ACT:

- A.** A Bushfire is identified, and a bushfire “EMERGENCY” or “WATCH AND ACT” or “ADVICE” warning is issued
- B.** A Bushfire is identified in the vicinity, no warnings are in place, but you are concerned for your safety

#### EVACUATION PROCEDURE:

1. Check the Bushfire information sources.
2. Call 000 if you are concerned for your safety.
3. Evaluate if the evacuation routes remain available.
4. Choose the appropriate evacuation destination & route.
5. Evacuate the property to a safer location.

### SHELTER ON-SITE (LAST RESORT)

**Triggers to Act:** Impact from bushfire is imminent, evacuation routes are threatened and there is no time to perform a safe evacuation or emergency services have instructed you to shelter in place.

**Procedure:** Take immediate action to survive. Call 000 to report your situation and location, shut all doors/windows, be aware and keep up to date.

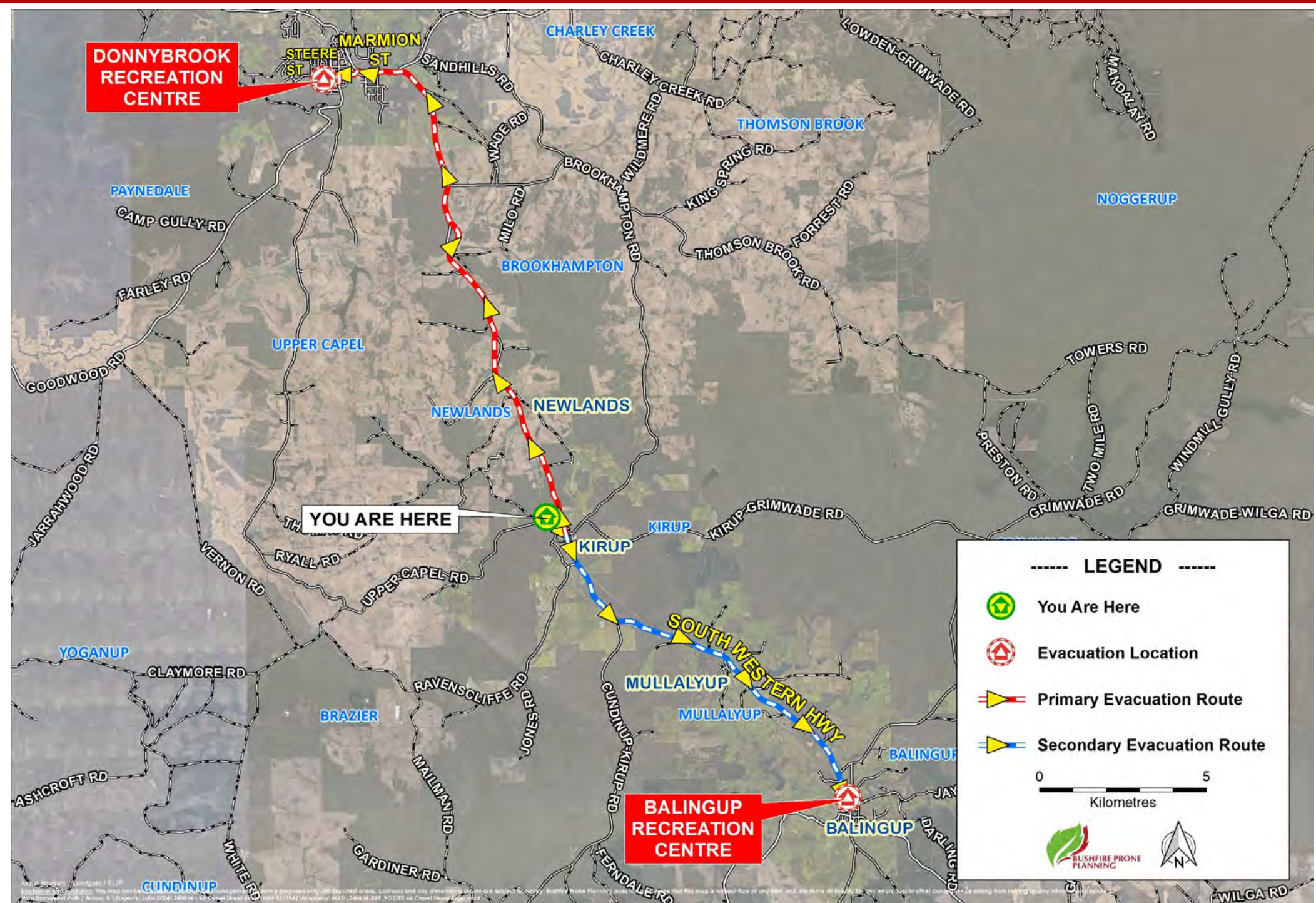
### EVACUATION DESTINATIONS / ROUTES

**Destination 1 (North):** Donnybrook Recreation Centre

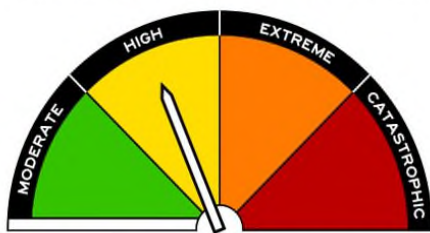
**Route 1 (North):** Capel Street – South - Western Highway (North) – Donnybrook

**Destination 2 (South):** Balingup Recreation Centre

**Route 2 (South):** Capel Street – South - Western Highway (South) – Balingup



#### FORECAST FIRE DANGER RATINGS



The higher the rating, the more dangerous the conditions and the greater the consequences if a fire starts.

No Rating	No Action Required
Moderate	Plan and Prepare
High	Be Ready to Act
Extreme	Take Action Now to Protect Your Life and Property
Catastrophic	For Your Survival, Leave Bush Fire Risk Areas

#### BUSHFIRE EVENT WARNINGS

##### ADVICE



A fire has started but there is no immediate threat to lives or homes. Be aware and keep up to date.

##### WATCH & ACT



There is a possible threat to lives or homes. You need to leave or get ready to defend. Do not wait & see.

##### EMERGENCY



There is a threat to lives or homes. You are in danger & need to act now to survive.